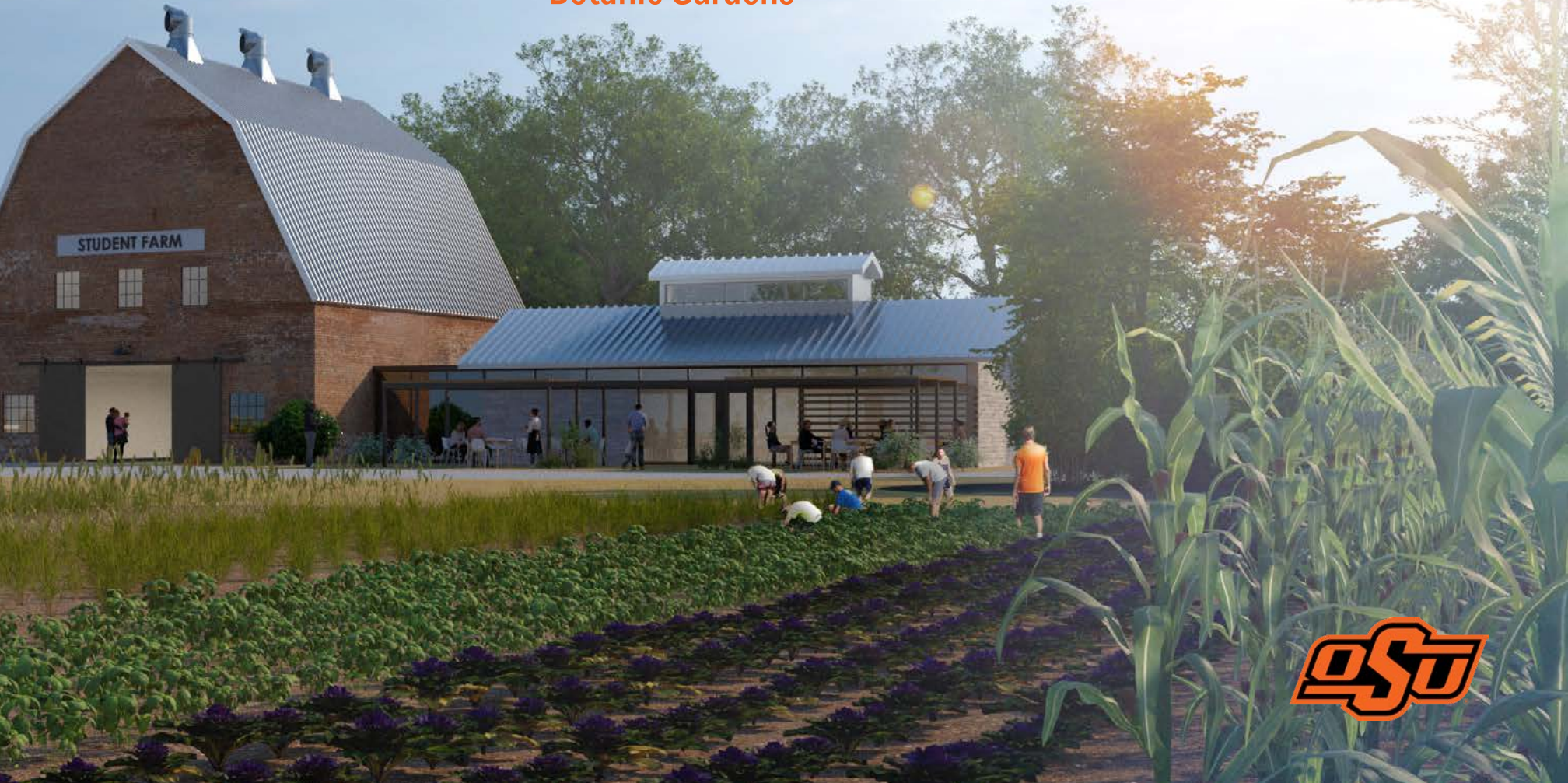


Integrating Communities, Innovating Prosperity

The Innovation Park
Student Farm
Botanic Gardens



The Vision

At the heart of The Innovation Park lies a visionary fusion of OSU's land-grant mission, technology development, commercial partnerships, progressive ideals, and deep-rooted cultural wisdom. Situated alongside the Student Farm, Botanic Gardens, and Agronomy Station, it creates a unique ecosystem for STEAM education, discovery, and service to all OSU communities.

The essence of The Innovation Park embodies technology research, collaborative innovation, commercialization, hospitality, and the arts, seamlessly integrating all facets of living, work, and leisure. This vision signifies a paradigm shift in education and technology development, recognizing the interconnectedness of people, animals, and the environment through the expertise found in the Innovation Foundation and OSU. It draws inspiration from the region's urban dynamism, rural resilience, and tribal heritage, weaving a tapestry of traditions and innovations to create a vibrant ecosystem to Integrate Communities and Innovate Prosperity.



Principles, People, Practices, Performance

Collaborative endeavors within The Park through the Applied Research Institutes bring together bright minds and top talent, fostering an environment where they can live, study, and address the world's most pressing health, technology, energy, and environmental challenges through hands-on research and development.



OKLAHOMA AEROSPACE INSTITUTE FOR RESEARCH AND EDUCATION

The Oklahoma Aerospace Institute for Research and Education (OAIRE) exemplifies expertise in aerospace research, commercialization, and education.



HUMAN PERFORMANCE & NUTRITION RESEARCH INSTITUTE

The Human Performance and Nutrition Research Institute (HPNRI) pioneers preventative therapeutic strategies to combat obesity and chronic diseases.



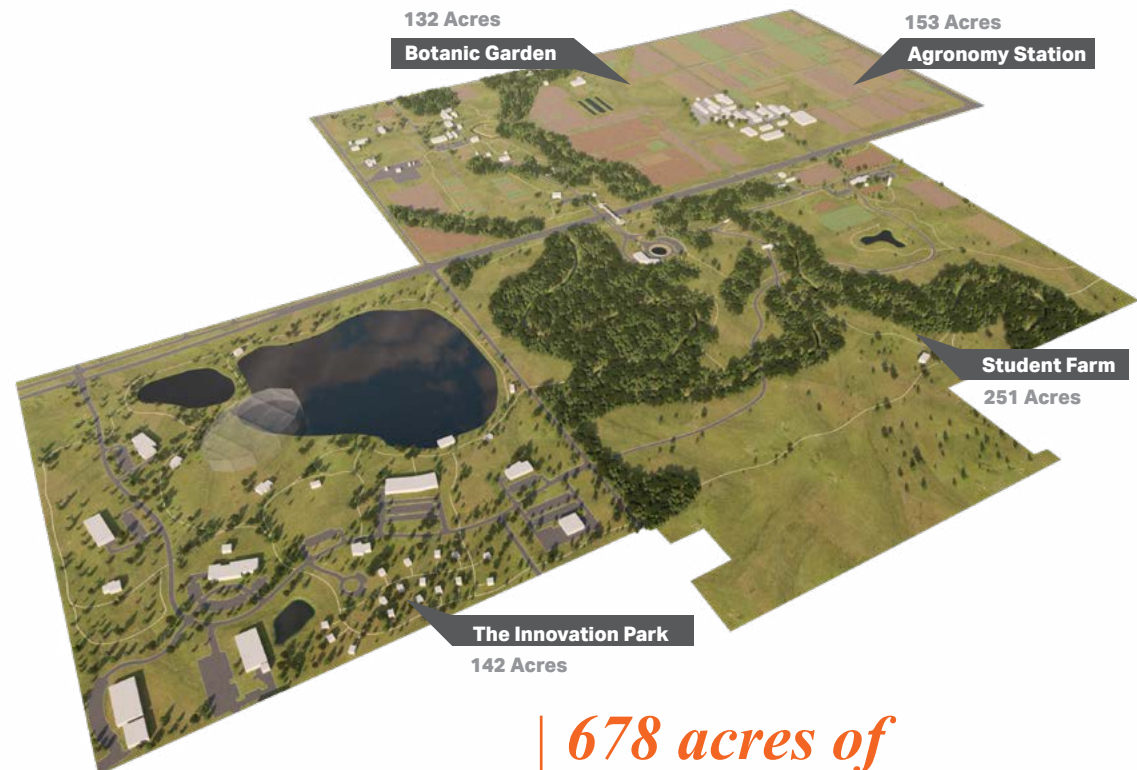
HAMM INSTITUTE FOR AMERICAN ENERGY

The Hamm Institute for American Energy leads the nation in energy security, independence, and innovation, leveraging on all forms of energy to power the world.



NATIONAL CENTER FOR WELLNESS AND RECOVERY INSTITUTE

The National Center for Wellness & Recovery (NCWR) translates scientific research into clinical treatments in close collaboration with physicians on the front lines.

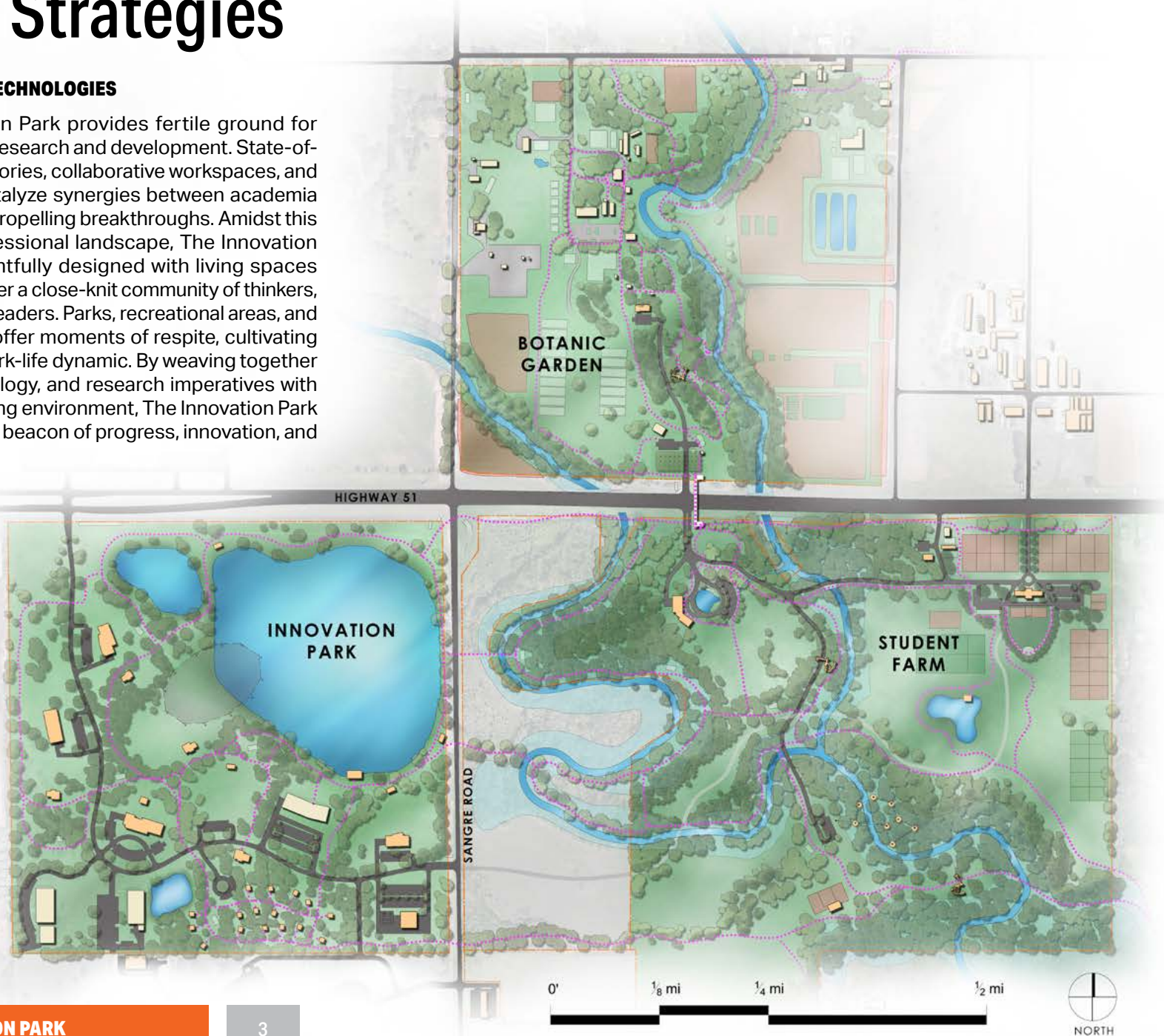


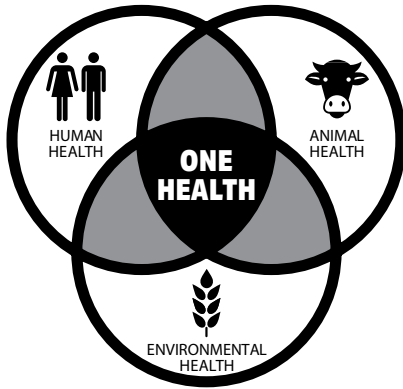
**678 acres of
Innovation**

Core Strategies

INTEGRATED TECHNOLOGIES

The Innovation Park provides fertile ground for cutting-edge research and development. State-of-the-art laboratories, collaborative workspaces, and incubators catalyze synergies between academia and industry, propelling breakthroughs. Amidst this dynamic professional landscape, The Innovation Park is thoughtfully designed with living spaces curated to foster a close-knit community of thinkers, creators, and leaders. Parks, recreational areas, and cultural hubs offer moments of respite, cultivating a balanced work-life dynamic. By weaving together health, technology, and research imperatives with a nurturing living environment, The Innovation Park aspires to be a beacon of progress, innovation, and well-being.





ONE HEALTH

At its core, a One Health initiative heralds a new era of interdisciplinary collaboration in healthcare. This initiative emphasizes human, animal, and environmental health, aligning with the intrinsic interconnectedness of our ecosystem. At Innovation Park, researchers endeavor to understand how people, animals, and the environment can mutually rely on each other to preserve global health and food security. This spans from studying the impact of pollutants and chemicals on plants, animals, and humans to enhancing food safety and gaining a deeper understanding of defense against infectious diseases.

Design Approach



CONNECTED CAMPUS

The Innovation Park will connect people and ideas to the arts through an optimized network of campus connections, both physically, visually, and interactively.



NATURE CENTRIC

The Park embraces the understanding that the human connection to nature is imperative to one's health and well-being and nurtures academic thought.



LIVE-WORK-PLAY

The Innovation Park is a mixed-use campus embracing and accommodating a live, work, and play environment, creating a rich and active experience that promotes collaboration and creativity.



IMPACTFUL IDENTITY

The Innovation Park's vision, values, and design will deliver an unparalleled story and strong, memorable, global brand for an internationally celebrated campus and pre-eminent land grant institution.



EXCELLENCE & INNOVATION

The Innovation Park will be a national destination for collaboration between research and industry partners in advanced technologies, data-driven health initiatives, advanced mobility, and energy.



HEALTH & WELLNESS

One's health and complete physical, mental, and social well-being are crucial to longevity and addressing social and economic disparity.



ADAPTABILITY & FLEXIBILITY

The Innovation Park demonstrates the commitment to adaptability and flexibility, enabling OSU applied research to meet the ever-changing demands of society.



SUSTAINABILITY & RESILIENCY

Recognizing that we have one earth, The Innovation Park will embrace the responsibility to minimize environmental impact and positively contribute back.



PEDESTRIAN BRIDGE AT THE INNOVATION PARK

The Student Farm

The Innovation Park's Student Farm is a collaborative endeavor between Oklahoma State University's Division of Agricultural Sciences and Natural Resources, Stillwater's Our Daily Bread Food and Resource Center, and the Human Performance and Nutrition Research Institute. This initiative provides OSU students with valuable experiential learning opportunities. It addresses food insecurity through the Regional Food Bank of Oklahoma, embodying a powerful fusion of education and community outreach.

- 1 Welcome Center
- 2 Pedestrian Bridge
- 3 Innovative Computing Center
- 4 Teledyne
- 5 Venture 1
- 6 Collaboration Pavilion
- 7 Housing Cluster
- 8 Internet Exchange Point
- 9 Horticulture Education Center
- 10 Historic Barn
- 11 Recreational Experience



HISTORIC BARN RENOVATION

Experiential learning thrives amid crop fields surrounding the historic barn at the Student Farm. The Barn undergoes a transformative renovation, preserving its core traditional structure. To better support the state-of-the-art agricultural needs, the low-slung milking wings are re-created in a modern rural vernacular. Within, a multi-functional space for workshops and lectures fosters agrarian education. An adjacent greenhouse facilitates year-round cultivation. A Processing facility will allow the crops to be processed and distributed throughout Oklahoma through the food banks.

A state-of-the-art immersive experience in the fields of agriculture and ranching.

HISTORIC BARN

Last year, the Student Farm produced 53,000 lbs of produce that facilitated 5,000 households throughout Payne County by partnering with Our Daily Bread Food and Resource Center. The goal is to impact the State through this endeavor.

Interdisciplinary collaboration, Research, Teaching, and Community Engagement are the highlights of the Student Farm; Extension is the apparatus that will be used to impact communities throughout the State, fulfilling the call from the State for OSU's Land Grant mission.



*A place for exploration
and discovery.*





CONFERENCE/LEARNING CENTER

Located within The Innovation Park, conference and learning centers will allow for Industry, community, and the University to come together in a collaborative learning environment, nurturing relationships throughout the state and with global partners to address

the issues within our state. Enlarging opportunities for faculty and students to gain research and new knowledge by broadening access to internships and various learning opportunities.



The Innovation Park

The Innovation Park is a nexus where OSU and industry forge mutually beneficial collaborations, offering resources tailored to nurture technology-based startup companies actively serving to support and encourage businesses and industry to relocate and expand in Oklahoma. It houses the Analytical Solutions Center, Drone Education Center, housing, and fitness options, and Internet Exchange Point, promoting a culture of real-world engagement.

- 1 Welcome Center
- 2 Pedestrian Bridge
- 3 Innovative Computing Center
- 4 Teledyne
- 5 Venture 1
- 6 Collaboration Pavilion
- 7 Housing Cluster
- 8 Internet Exchange Point
- 9 Horticulture Education Center
- 10 Historic Barn
- 11 Recreational Experience





*Building a
unique culture
of innovation*

ANALYTICAL SOLUTIONS CENTER

This Center will be home to OSU's state-of-the-art supercomputer and advanced analytics infrastructure – enabling immense amounts of data to be processed and analyzed to support the technology needs of the University and commercial partnerships. This supercomputer will be housed in a newly re-imagined space at The Innovation Park. This new center will elevate the research and analytics capabilities of the State and the nation and make OSU the leader in supercomputing for Oklahoma and the surrounding region.



COLLABORATION CENTER

At its core, The Innovation Park is intended to serve as a platform to share ideas, blur industries, and explore the next. Interdisciplinary multi-sector collaboration is a main focus area and is promoted through a series of collaboration centers that are strategically placed throughout the Park.

Advancing our rural communities through research and development.

INTERNET EXCHANGE POINT

The carrier-neutral internet exchange point at The Innovation Park improves regional internet performance by reducing latency and keeping internet traffic that needs to stay local while making cloud services and content faster and more reliable. Industry needs the capabilities that it will provide, and the community and region will benefit from increased competition and access to more providers.

DRONE EDUCATION CENTER

Within The Innovation Park's Drone Education Center, students and the community can engage in hands-on flight training, study advanced navigation techniques, and explore various drone applications and anti-drone capabilities. The cutting-edge facility with simulators and UAVs is within The Innovation Park with open and closed flight zones.





*Living intentionally,
elevating what's
possible*

HOUSING AND FITNESS

Housing quads with eight living units and a shared living room promote collaboration and interaction throughout the campus. Areas within buildings and outdoors combine quiet, reflective areas and group physical activities to promote individual wellness.

Botanic Garden

The Botanic Garden within The Innovation Park functions as a dynamic, multidisciplinary laboratory serving more than 40,000 visitors annually. It is home to various departments within Oklahoma State's Division of Agricultural Science and Natural Resources alongside the broader local and regional communities. Ongoing practices and projects encompass drought response, water quality, sustainable practices, energy, and STEAM education.



- 1 Welcome Center
- 2 Pedestrian Bridge
- 3 Innovative Computing Center
- 4 Teledyne
- 5 Venture 1
- 6 Collaboration Pavilion
- 7 Housing Cluster
- 8 Internet Exchange Point
- 9 Horticulture Education Center
- 10 Historic Barn
- 11 Recreational Experience



HORTICULTURE EDUCATION CENTER

The Horticulture Education Center is a beacon of learning nestled within the lush grounds of OSU's Botanic Garden. The modern, eco-conscious structure blends seamlessly with the rural vernacular and natural surroundings. Featuring hands-on classrooms and interactive green spaces, it is poised to cultivate the next generation of horticulture pioneers.

| *Experiential in nature.*

TREEWALK VILLAGE AT THE BOTANIC GARDEN

The Treewalk Village offers an enchanting setting for a hands-on, interactive experience amid the Pin Oaks of the Botanic Garden. This assists in introducing children and their families to horticulture, agriculture, and the outdoor environment by encouraging physical activity and fun elements through various levels of ropes, platforms, and swinging bridges. The incorporation of art will be seen throughout the park through interactive AI-generated lighting and displays. We believe this to be one of the most exciting additions to the park, as it can lead to a new era of artistic features by integrating art, technology, and nature.



www.facebook.com/okstate



<https://twitter.com/OSUInnovation>



<https://www.linkedin.com/company/theinnovationfoundationatosu/>

<https://go.okstate.edu/theinnovationfoundation/>



Dewberry[®]



ARCHITECTS + ENGINEERS